

SOUTH WEST NARRANDERA SEWER SCOPING STUDY

Information Sheet

Q: Why was the purpose of the scoping study?

There are a number of On-site Sewage Management Systems (OSSMS) located above the aquifers in which Narrandera source the town's water supply. This represents a potential concern for Council's water source to be contaminated. Replacing existing septic systems with a reticulation sewer will prevent potential infiltration into Council's water source and make provision for future development and housing.

Q: What were the study findings?

A detailed assessment of the performance of approximately 10% of the existing on-site sewage management systems (OSSMS) revealed a generally poor degree of condition and operation in terms of risk to public health &/or the environment.

It was determined that it would be feasible to expand the sewer network to all areas of the study, except the areas along Leeton Road and Back Dixonville Road west of River Street.

These areas were deemed suitable to continue using OSSMS due to their larger lot sizes, provided additional controls are put in place.

Q: What will it cost to connect if the sewer network is expanded?

The cost of the connection will be approximately \$2,739.30 per property for a single connection. This is the same fee incurred by properties connecting to the new sewer system in Barellan, or for new lots connecting to the sewer system in the already serviced areas of Narrandera currently.

Q: What will the annual charges associated with being connected to the sewer be?

The provision of a Sewerage Network will require annual charges associated with the operational and maintenance requirements of the System. The sewer charges for the areas included in the expansion will be the same as the rest of the shire. Currently the fee is \$771.30 per year. This fee is levied on properties adjacent to sewer mains regardless of if they are connected or not.

Q: Are pension rebates applicable to sewerage charges?

Yes. The maximum rebate allowed for sewerage is \$87.50 per annum.

Q: What happens next?

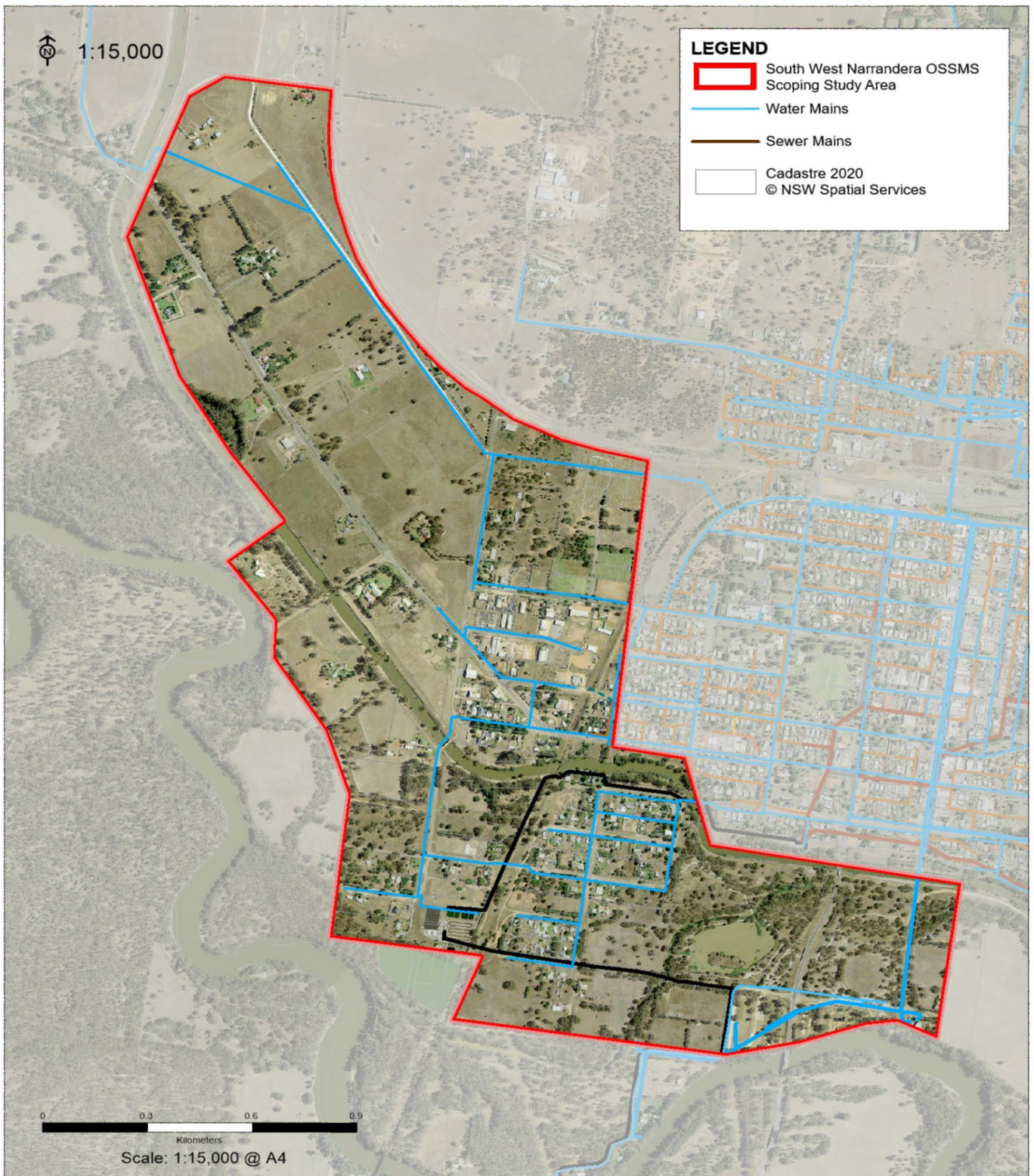
Council will seek further funding to undertake detailed design and construction of the expanded sewer network in the coming years. Timelines for this stage of the project are not set, and will depend on the availability of grant funding.

The project is unlikely to be affordable without additional grant funding.

At any time during the project you are encouraged to contact Council for more information on **02 6959 5510** or council@narrandera.nsw.gov.au

SOUTH WEST NARRANDERA SEWER SCOPING STUDY

Information Sheet



NARRANDERA SHIRE COUNCIL
141 East Street
Narrandera NSW 2700
Ph: 02 6959 5510

South West Narrandera OSSMS Scoping Study

This map is a representation of the information currently held by Narrandera Shire Council. While every effort has been made to ensure the accuracy of the product, Council accepts no responsibility for any errors or omissions.

Date: 12/02/2020

Compiled by: GIS NSC

Co-ordinate System:
MGA 94 Zone 55

Ref: 2020-003