

1
P1244187

ROAD 30 WIDE

CONC KERB

CONC KERB
UNDER CONSTRUCT

STOCKPILE

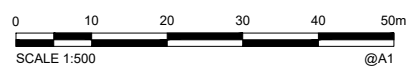
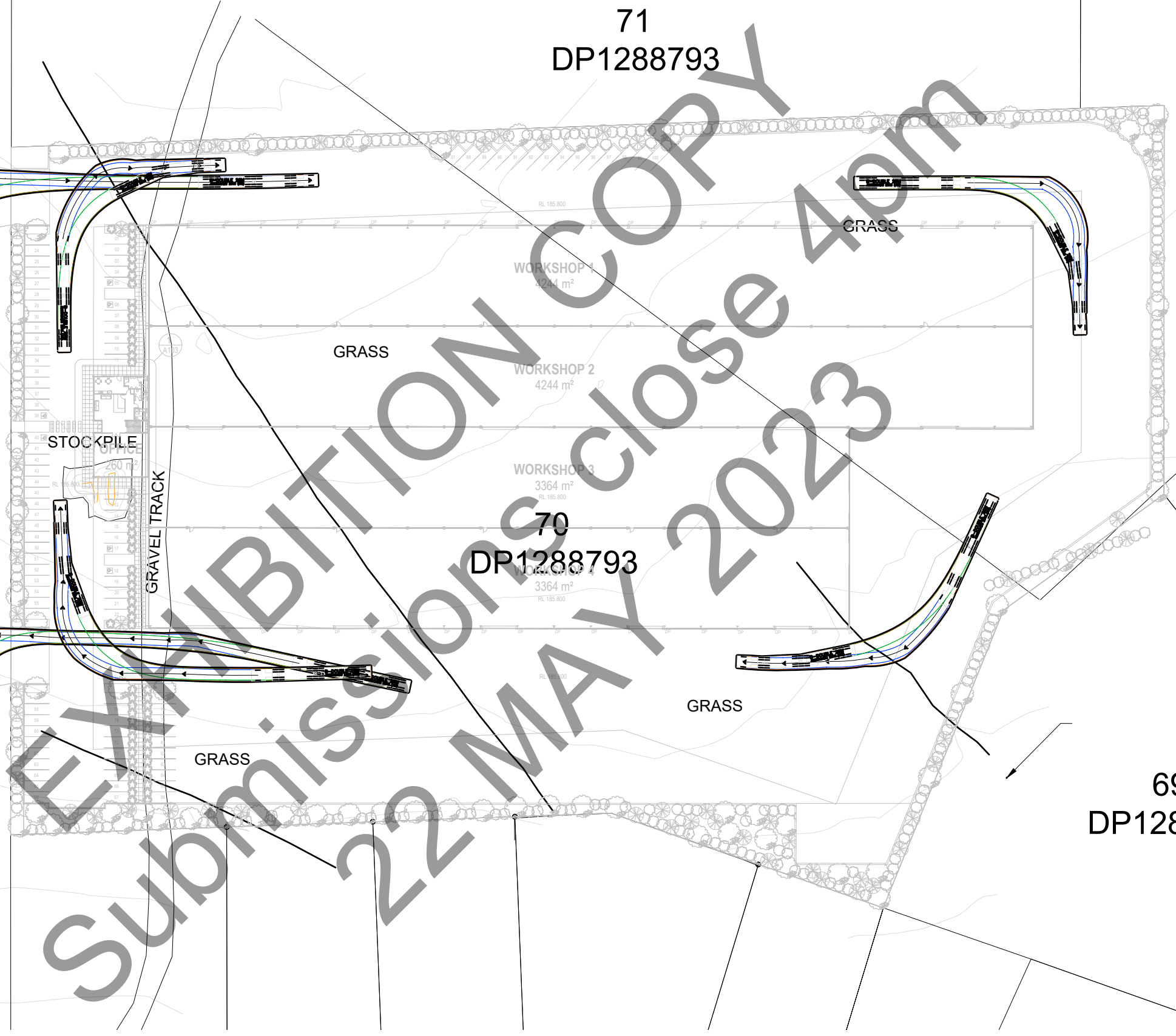
GRAVEL TRACK

71
DP1288793

70
DP1288793

67
DP1288793

69
DP1288793



DESIGNED: DB	DATUM: AHD	A1
DRAWN: DB	COORDINATE SYSTEM:	
CHECKED:	APPROVED:	
RECOMMENDED:	PROJECT MANAGER: DATE	PROJECT DIRECTOR: DATE

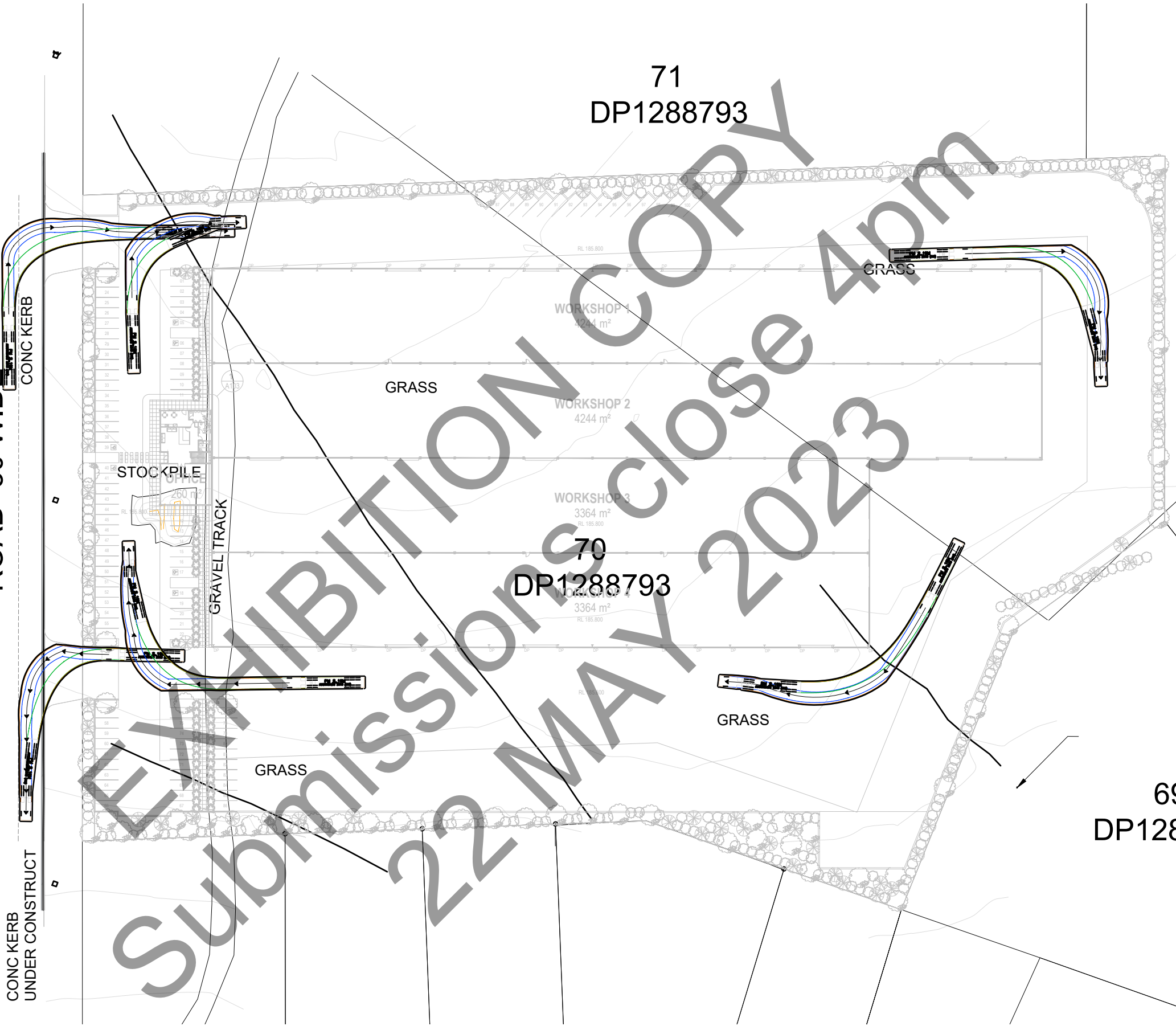
cubo
CUBO CONSULTING PTY LTD
ABN: 46 610 277 462
Suite 6, 220 The Entrance Road, Erina NSW
Phone: (02) 4326 0990 Email: admin@cubo.net.au

BHULLAR GROUP PTY LTD
PROPOSED INDUSTRIAL DEVELOPMENT
LOT 70 DROVERS RD
NARRANDERA
SWEEP PATHS - B-DOUBLE

DRAWING STATUS: PRELIMINARY	
NOT TO BE USED FOR CONSTRUCTION PURPOSES	
DRAWING NUMBER: 23030-CI-010	REV: 1

1
P1244187

ROAD 30 WIDE

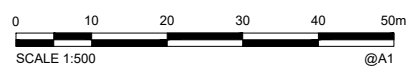


71
DP1288793

70
DP1288793

67
DP1288793

69
DP1288793



DESIGNED: DB	DATUM: AHD	A1
DRAWN: DB	COORDINATE SYSTEM:	
CHECKED:	APPROVED:	
RECOMMENDED:	PROJECT MANAGER: DATE	PROJECT DIRECTOR: DATE

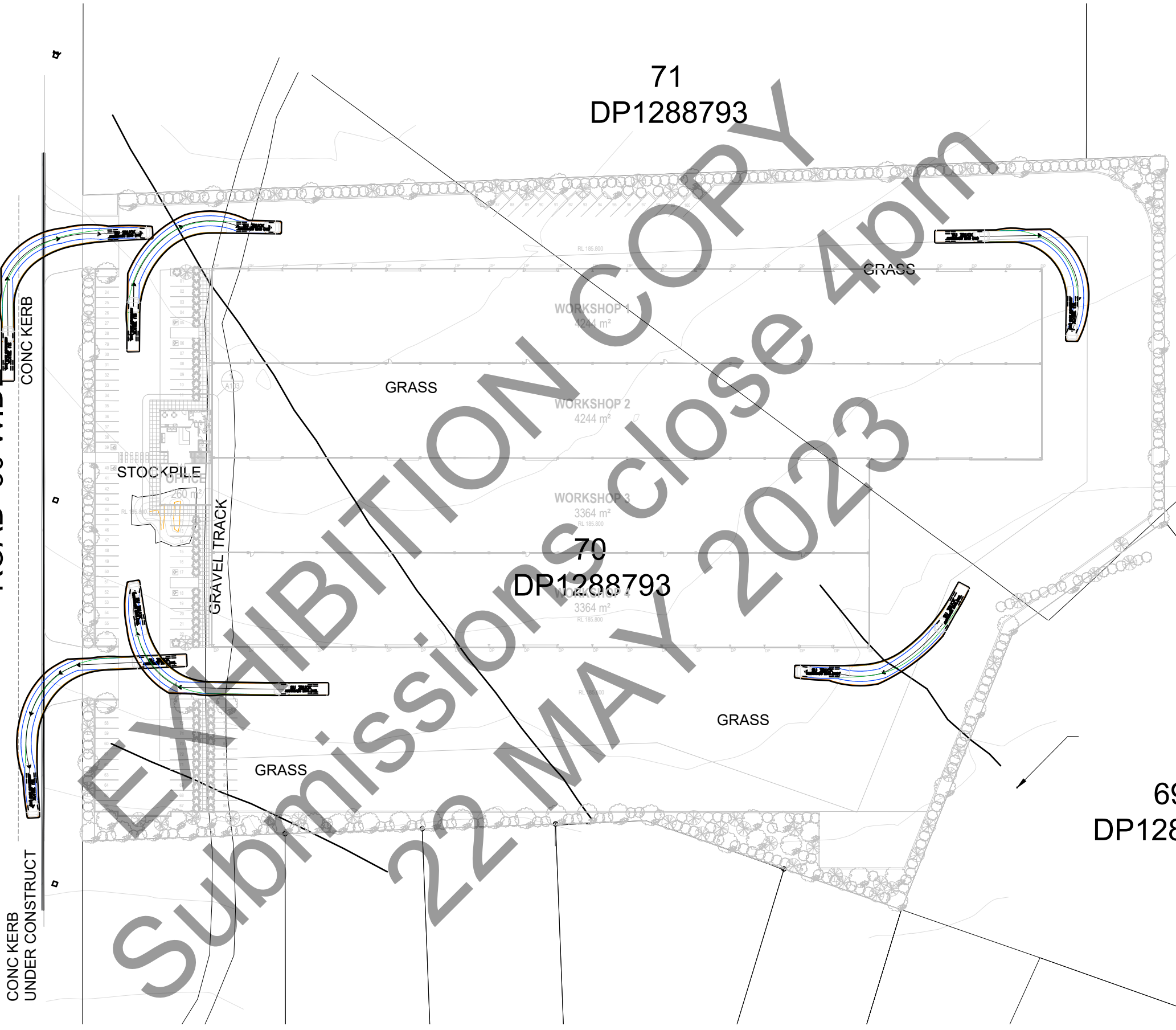
CUBO
CUBO CONSULTING PTY LTD
ABN: 46 610 277 462
Suite 6, 220 The Entrance Road, Erina NSW
Phone: (02) 4326 0990 Email: admin@cubo.net.au

BHULLAR GROUP PTY LTD
PROPOSED INDUSTRIAL DEVELOPMENT
LOT 70 DROVERS RD
NARRANDERA
SWEPT PATHS - ARTICULATED VEHICLE

DRAWING STATUS: PRELIMINARY	
NOT TO BE USED FOR CONSTRUCTION PURPOSES	
DRAWING NUMBER: 23030-CI-011	REV: 1

1
P1244187

ROAD 30 WIDE

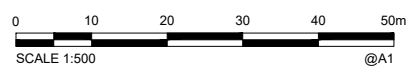


71
DP1288793

70
DP1288793

67
DP1288793

69
DP1288793



DESIGNED: DB	DATUM: AHD	A1
DRAWN: DB	COORDINATE SYSTEM:	
CHECKED:	APPROVED:	
RECOMMENDED:	PROJECT MANAGER: DATE	PROJECT DIRECTOR: DATE

cubo
CUBO CONSULTING PTY LTD
ABN: 46 610 277 462
Suite 6, 220 The Entrance Road, Erina NSW
Phone: (02) 4326 0990 Email: admin@cubo.net.au

BHULLAR GROUP PTY LTD
PROPOSED INDUSTRIAL DEVELOPMENT
LOT 70 DROVERS RD
NARRANDERA
SWEEP PATHS - HRV

DRAWING STATUS: PRELIMINARY	
NOT TO BE USED FOR CONSTRUCTION PURPOSES	
DRAWING NUMBER: 23030-CI-012	REV: 1

1. Erosion Hazard and Sediment

Site area	Sub-catch
Total catchment area (ha)	3.6
Disturbed catchment area (ha)	3.6

Soil analysis (enter sediment type if known)

Sediment Type (C, F or D) if known:	
% sand (fraction 0.02 to 2.00 mm)	
% silt (fraction 0.002 to 0.02 mm)	
% clay (fraction finer than 0.002 mm)	
Dispersion percentage	
% of whole soil dispersible	0
Soil Texture Group	D

Rainfall data

Design rainfall depth (no of day s)	5
Design rainfall depth (percentile)	80
x-day, y-percentile rainfall event (mm)	18.8
Rainfall R-factor (if known)	1000
IFD: 2-year, 6-hour storm (if known)	

RUSLE Factors

Rainfall erosivity (R-factor)	1000
Soil erodibility (K-factor)	0.5
Slope length (m)	192
Slope gradient (%)	2.6
Length/gradient (LS-factor)	0.81
Erosion control practice (P-factor)	1.3
Ground cover (C-factor)	1





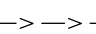


Sediment Basin Design Criteria (for Type)

Storage (soil) zone design (no of months)	2
Cv (Volumetric runoff coefficient)	0.25

Calculations and Type D/F Sediment Basin

Soil loss (t/ha/yr)	529
Soil Loss Class	5
Soil loss (m ³ /ha/yr)	407
Sediment basin storage (soil) volume (m ³)	244
Sediment basin settling (water) volume (m ³)	169
Sediment basin total volume (m ³)	413

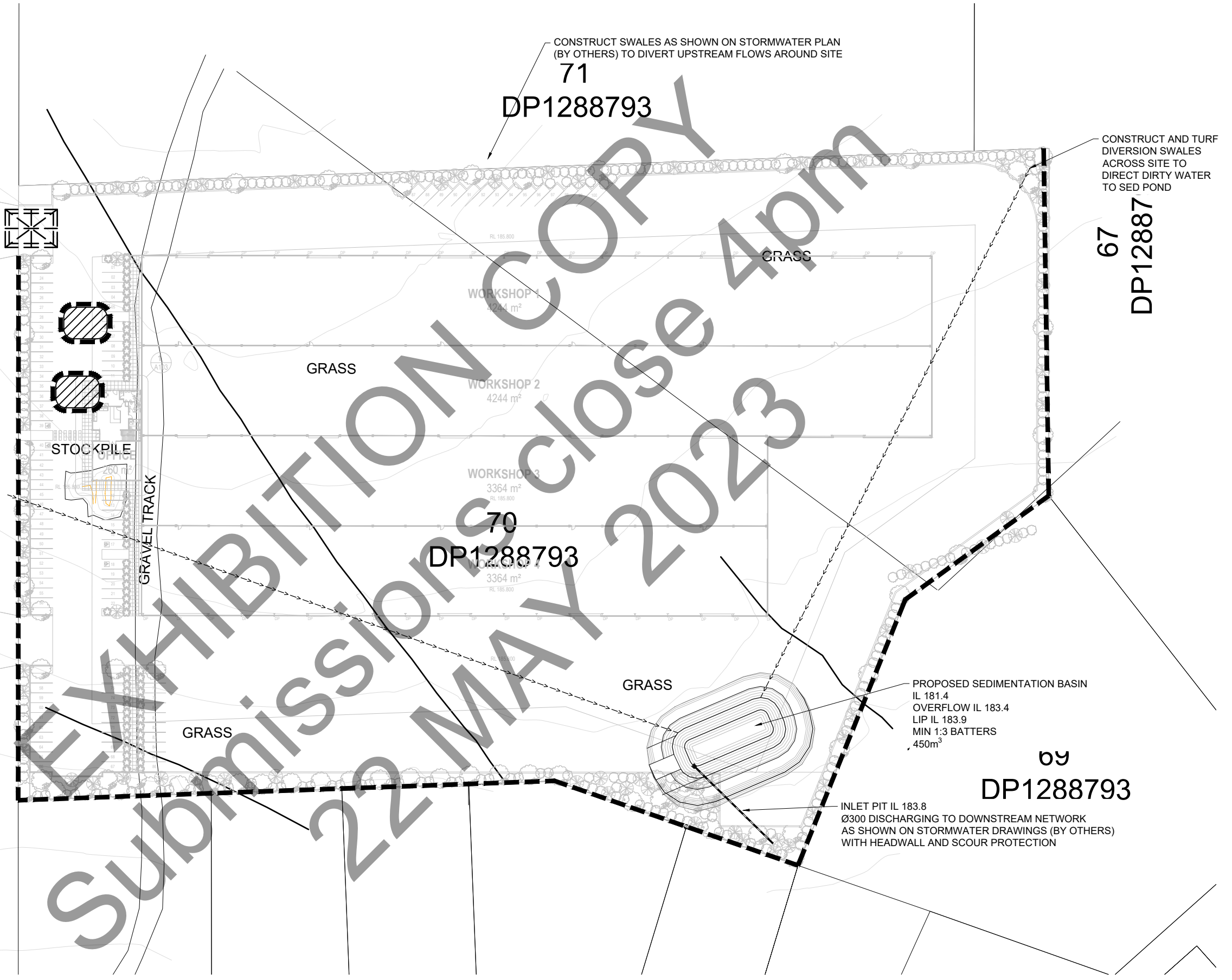
1
P1244187

-  TEMPORARY SURFACE INLET SEDIMENT TRAP OR GROSS POLLUTANT TRAP TO BE PROVIDED
-  SILT FENCE
-  TEMPORARY CONSTRUCTION VEHICLE EXIT
-  TEMPORARY STOCKPILE OF TOPSOIL SURROUNDED WITH SILT FENCE
-  DIVERSION BANK AND CHANNEL
-  GRAVEL FILLED SAUSAGE
-  SEDIMENT BARRIER FOR GRATED DRAIN

ROAD 30 WIDE

CONC KERB

CONC KERB UNDER CONSTRUCT



CONSTRUCT SWALES AS SHOWN ON STORMWATER PLAN (BY OTHERS) TO DIVERT UPSTREAM FLOWS AROUND SITE

71
DP1288793

CONSTRUCT AND TURF DIVERSION SWALES ACROSS SITE TO DIRECT DIRTY WATER TO SED POND

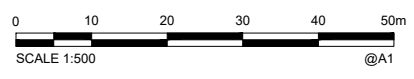
67
DP12887

70
DP1288793

PROPOSED SEDIMENTATION BASIN
IL 181.4
OVERFLOW IL 183.4
LIP IL 183.9
MIN 1:3 BATTERS
450m³

69
DP1288793

INLET PIT IL 183.8
Ø300 DISCHARGING TO DOWNSTREAM NETWORK AS SHOWN ON STORMWATER DRAWINGS (BY OTHERS) WITH HEADWALL AND SCOUR PROTECTION

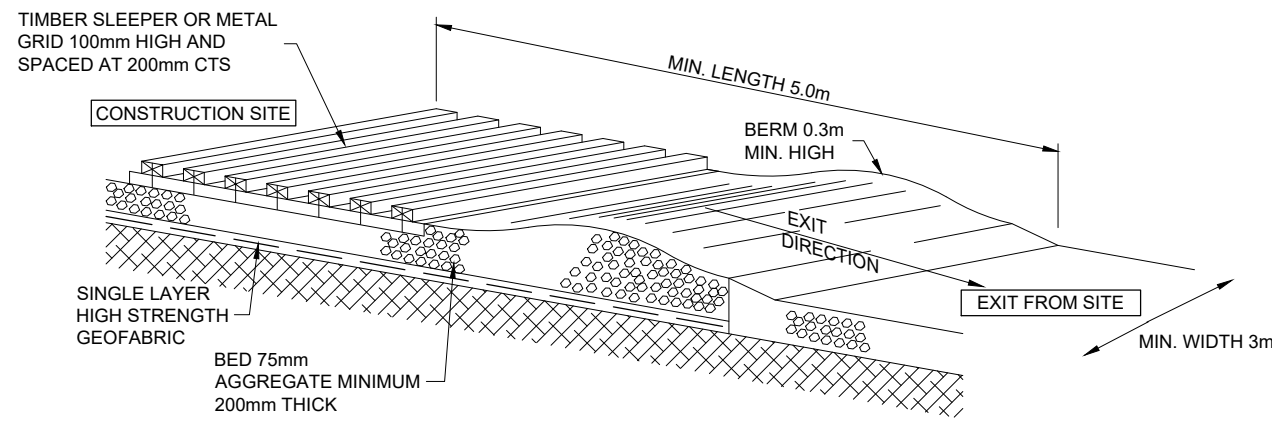


DESIGNED: DB	DATUM: AHD	A1
DRAWN: DB	COORDINATE SYSTEM:	
CHECKED:	APPROVED:	
RECOMMENDED:	PROJECT MANAGER: DATE	PROJECT DIRECTOR: DATE

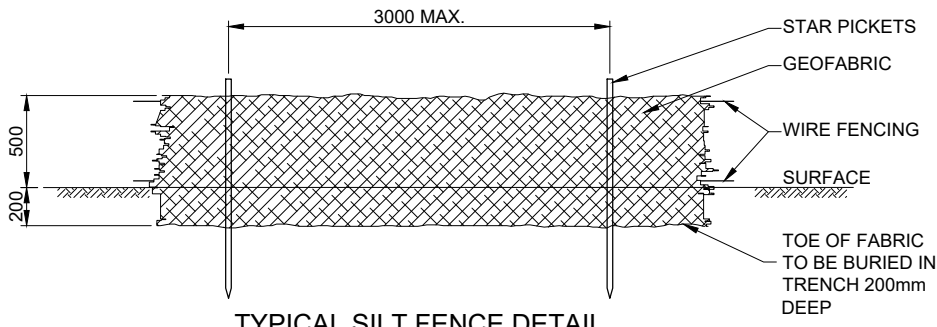
CUBO
CUBO CONSULTING PTY LTD
ABN: 46 610 277 462
Suite 6, 220 The Entrance Road, Erina NSW
Phone: (02) 4326 0990 Email: admin@cubo.net.au

BHULLAR GROUP PTY LTD
PROPOSED INDUSTRIAL DEVELOPMENT
LOT 70 DROVERS RD
NARRANDERA
SEDIMENT AND EROSION CONTROL PLAN

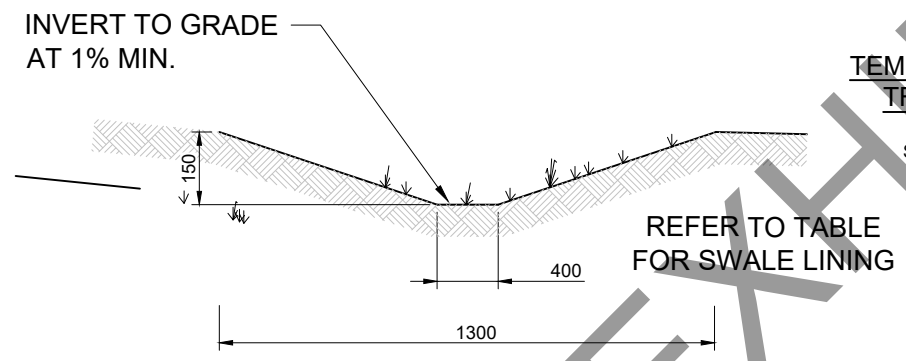
DRAWING STATUS: PRELIMINARY	
NOT TO BE USED FOR CONSTRUCTION PURPOSES	
DRAWING NUMBER:	REV
23030-CI-020	1



TEMPORARY CONSTRUCTION VEHICLE EXIT
NTS

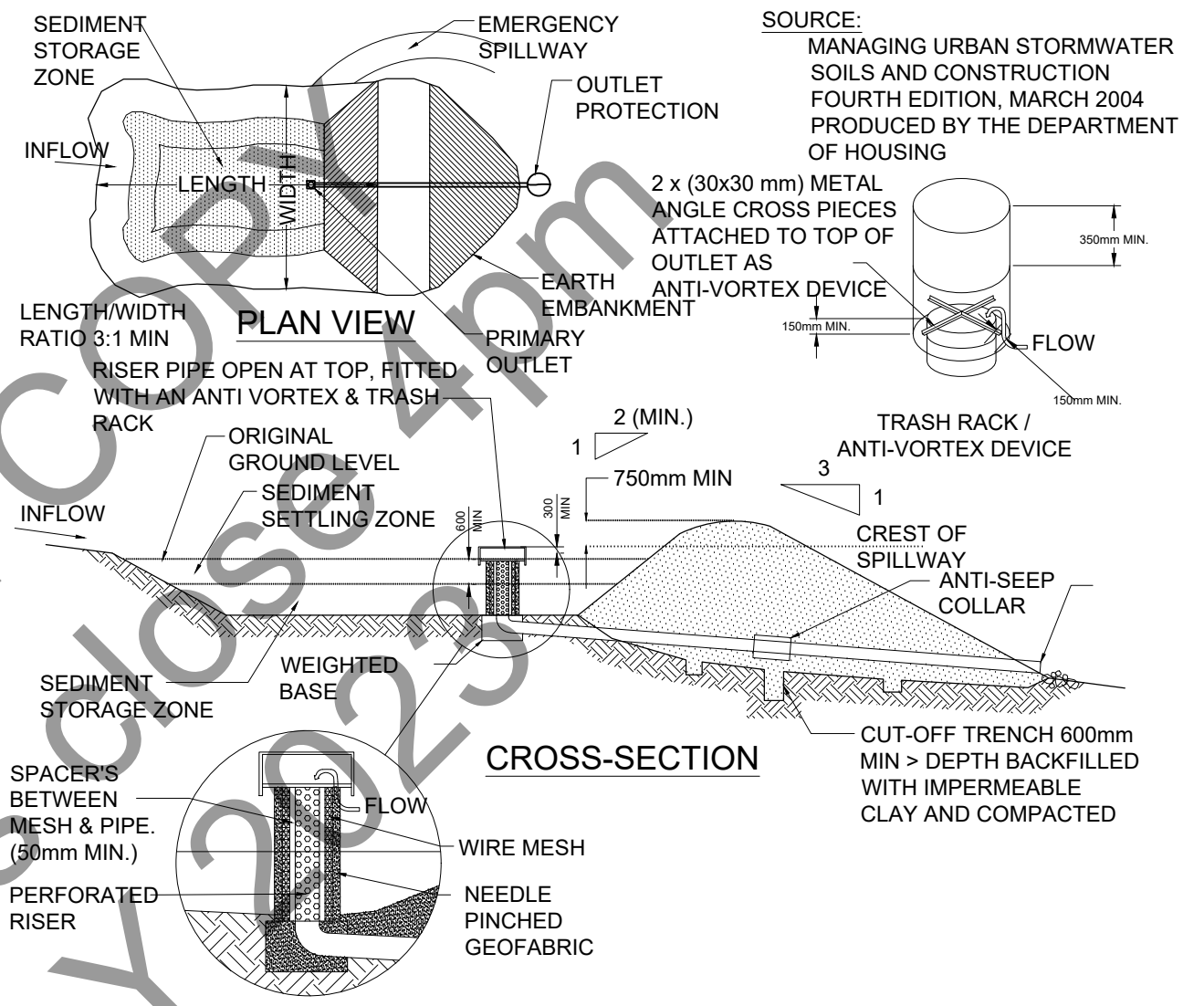


TEMPORARY SURFACE INLET SEDIMENT TRAP OR GROSS POLLUTANT TRAP
WHEN USED AS A GROSS POLLUTANT TRAP STRUCTURE SHALL BE REGULARLY DESILTED



SWALE TYPE 1
GRASSED SWALE DETAIL
NOT TO SCALE

DRAINAGE LININGS SCHEDULE			
DRAIN TYPE	GRADE	LINED	LINING
SWALE DRAIN	< 0.5%	YES	CONCRETE / SHOTCRETE
	0.5 TO 5%	NO	DRAIN TO BE TOPSOILED, SEEDED & JUTE MESH FM FIXED OVER
	5% TO 12%	YES	ENKAMAT
	> 12%	YES	CONCRETE / SHOTCRETE



CONSTRUCTION NOTES:

- REMOVE ALL VEGETATION AND TOPSOIL FROM UNDER THE DAM WALL AND FROM WITHIN THE STORAGE AREA.
- FORM A CUT OFF TRENCH UNDER THE CENTRELINER OF THE EMBANKMENT 600mm DEEP & 1200mm WIDE, EXTENDING TO A POINT ON THE WATERCOURSE WALL ABOVE THE RISER SILL LEVEL.
- MAINTAIN THE TRENCH FREE OF WATER AND RECOMPACT THE MATERIALS WITH EQUIPMENT AS SPECIFIED IN THE SWMP TO 95 PER CENT STANDARD PROCTOR DENSITY.
- SELECT FILL ACCORDING TO THE SWMP THAT IS FREE FROM ROOTS, WOOD, ROCK, LARGE STONE OR FOREIGN MATERIAL.
- PREPARE THE SITE UNDER THE EMBANKMENT BY RIPPING TO AT LEAST 100 MM TO HELP BOND COMPACTED FILL TO THE EXISTING SUBSTRATE.
- SPREAD THE FILL IN 100 MM TO 150 MM LAYERS AND COMPACT IT AT OPTIMUM MOISTURE CONTENT FOLLOWING THE SWMP.
- INSTALL THE PIPE OUTLET WITH SEEPAGE COLLARS AS SPECIFIED IN THE SWMP & STANDARD DRAWING 6-3b.
- FORM BATTER GRADES AT 2(H):1(V) UPSTREAM & 3(H):1(V) DOWNSTREAM OR AS SPECIFIED IN THE SWMP.

SILTATION POND - TYPICAL DETAILS
N.T.S.

REV	DATE	DESCRIPTION	DRN	CHK
1	26/04/23	PRELIMINARY	DB	-
REVISIONS				

DESIGNED: DB	DATUM: AHD	A1
DRAWN: DB	COORDINATE SYSTEM:	
CHECKED:	APPROVED:	
RECOMMENDED:	PROJECT MANAGER: DATE	PROJECT DIRECTOR: DATE

CUBO
CUBO CONSULTING PTY LTD
ABN: 46 610 277 462
Suite 6, 220 The Entrance Road, Erina NSW
Phone: (02) 4326 0990 Email: admin@cubo.net.au

BHULLAR GROUP PTY LTD
PROPOSED INDUSTRIAL DEVELOPMENT
LOT 70 DROVERS RD
NARRANDERA
SEDIMENT AND EROSION CONTROL DETAILS

DRAWING STATUS: **PRELIMINARY**
NOT TO BE USED FOR CONSTRUCTION PURPOSES
DRAWING NUMBER: 23030-CI-021
REV: 1